



G⁺

BY **GRAM**
PROFESSIONAL

BEST IN CLASS
– BUILD TO THRIVE IN THE
TOUGHEST KITCHENS

PRODUCT CATALOGUE
GASTRO 2026



Is a brand by Gram Professional.

We design and manufacture professional refrigerators and freezers of the highest quality at our factory in Denmark as part of the Gram legacy since 1901.



MADE IN
DENMARK

CONTENTS

MAXI CABINETS

ABOUT MAXI	5
700 PLUS	6
1400 PLUS	6
510 EURO	7
710 TWIN	7
650 MIDI	8
650 MIDI DISPLAY	8
1200 ROLL-IN	9
690 STANDARD	9

COMPACT CABINETS

ABOUT COMPACT	13
200	14
200 DISPLAY	14
400	15
400 DISPLAY	15
600	16
600 DISPLAY	16

GASTRO COUNTERS

ABOUT GASTRO COUNTERS	19
C2 / F2 2-SECTION	20
C3 / F3 3-SECTION	20
C4 / F4 4-SECTION	20

PROCESS CABINETS

ABOUT PROCESS	23
BC50	24
SC500	25
SC710	25

DIMENSIONS

MAXI CABINETS	28 - 31
COMPACT CABINETS	32 - 33
GASTRO COUNTERS	34 - 35
PROCESS CABINETS	36 - 37

WHY CHILLERS AND NOT REFRIGERATORS?

Chillers and refrigerators are very similar, but with the key distinction that refrigerators only cover positive temperatures (+2/+12°C), while chillers also cover negative temperatures (-5/+12°C).

The extended temperature range makes the chiller flexible to the dynamic environment of a professional kitchen. With no disadvantage – we believe this serves our customers best.

MAXI CABINETS

Powerful Fridges and Freezers for Professional Use

In a restaurant kitchen, the pace is fast, and the demands are high, so refrigeration equipment must be reliable, efficient and easy to handle – every day.

Our Maxi range is designed to thrive in the toughest environments in the professional kitchens, where reliability and durability are a must, even with frequent door openings and high demands for temperature stability.

Each cabinet has been extensively tested, so we know what it can withstand. As an example, our doors are tested to be opened more than 800,000 times, equivalent to more than 15 years of usage.

With low running costs, superb temperature stability and an innovative design that makes cleaning easy, the G⁺ Maxi range offers efficiency and peace of mind to your kitchen and staff. Ideal for restaurants, commercial kitchens and other environments where performance must not be compromised.

The Maxi range comes as freezers and chillers with extended temperature range. All cabinets have a unique integrated full length handle, rounded corners, magnetic removable door gaskets, anti-tilt shelves, LED light and self-closing doors with lock as standard.

Undoubtedly some of the most robust and reliable refrigerators and freezers on the market, perfectly adapted for intensive professional use.



Standard

- Stainless steel inside and out
- 3 or 4 wire shelves
- Reversible, self-closing, right-hinged door with lock
- Practical foot pedal door opener (not applicable to 690 Standard)
- Adjustable legs: 135/200 mm

Optional

- Stainless steel wire shelves or stainless steel perforated shelves
- Left- or right-hinged door
- Alternative legs or castor sizes
- Alternative shelf support rails to adjust the cabinet to other tray sizes
- The products are also available for remote installation with CO2 or other refrigerants
- Remote products are also available with 'hygiene roof' and re-evaporation tray bottom mounted

Maxi 700 Plus

Maxi 700 Plus is designed for those who need a deep cabinet. This unique dimension allows two standard GN 1/1 canteens in the depth on one support rail. Perfect for kitchens that require a storage solution combined with both shelves and canteens.



MAXI C700 PLUS
MAXI F700 PLUS

	CHILLER	FREEZER
MODEL	C700 PLUS	F700 PLUS
ITEM NUMBER	947010120	947020220
TEMPERATURE RANGE	-5°C/+12°C	-25°C/-5°C
DIMENSIONS W x D x H (mm)	700 x 909 x 2125*	700 x 909 x 2125*
NUMBER OF SHELVES (530 x 650 mm)	4	4
GROSS VOLUME (liter)	610	610
NET VOLUME (liter)	451	451
SOUND LEVEL (dB(A))	46,6	47,3
REFRIGERANT	R600a	R290
COOLING CAPACITY AT -10°C (W)	260	-
COOLING CAPACITY AT -25°C (W)	-	490
CONNECTION LOAD (W)	144	368
ENERGY EFFICIENCY CLASS / EEI	A / 23,5	C / 40,8
CLIMATE CLASS	5	5
ANNUAL ENERGY CONSUMPTION (kWh)	318	1508

* Height with L1 legs: 2090 mm

Maxi 1400 Plus

Maxi 1400 Plus is a double door cabinet in the deep GN 2/1 measure, allowing two 1/1 GN canteens to be placed in depth on each side. Ideal for kitchens that require generous storage and the flexibility to combine shelves and GN canteens.



MAXI C1400 PLUS
MAXI F1400 PLUS

	CHILLER	FREEZER
MODEL	C1400 PLUS	F1400 PLUS
ITEM NUMBER	941410120	941420220
TEMPERATURE RANGE	-5°C/+12°C	-25°C/-5°C
DIMENSIONS W x D x H (mm)	1400 x 909 x 2125*	1400 x 909 x 2125*
NUMBER OF SHELVES (530 x 650 mm)	8	8
GROSS VOLUME (liter)	1359	1359
NET VOLUME (liter)	1050	1050
SOUND LEVEL (dB(A))	48,6	46,7
REFRIGERANT	R290	R290
COOLING CAPACITY AT -10°C (W)	560	-
COOLING CAPACITY AT -25°C (W)	-	877
CONNECTION LOAD (W)	248	607
ENERGY EFFICIENCY CLASS / EEI	A / 24,1	C / 40,9
CLIMATE CLASS	5	5
ANNUAL ENERGY CONSUMPTION (kWh)	562	2720

* Height with L1 legs: 2090 mm

Maxi 510 Euro

Maxi 510 Euro is designed to meet European standard dimensions. With a width of just 600 mm, it fits easily into many kitchen spaces. The shelves accommodate a GN 1/1 canteen alongside smaller containers, allowing flexible combinations to suit your needs. Choose this cabinet for a professional solution with generous storage and a small footprint.



MAXI C510 EURO
MAXI F510 EURO

	CHILLER	FREEZER
MODEL	C510 EURO	F510 EURO
ITEM NUMBER	945110120	945120220
TEMPERATURE RANGE	-5°C/+12°C	-25°C/-5°C
DIMENSIONS W x D x H (mm)	600 x 859 x 2125*	600 x 859 x 2125*
NUMBER OF SHELVES (400 x 600 mm)	4	4
GROSS VOLUME (liter)	465	465
NET VOLUME (liter)	314	314
SOUND LEVEL (dB(A))	45,6	48,9
REFRIDGERANT	R290	R290
COOLING CAPACITY AT -10°C (W)	260	-
COOLING CAPACITY AT -25°C (W)	-	402
CONNECTION LOAD (W)	144	367
ENERGY EFFICIENCY CLASS / EEI	B / 28,3	D / 53,7
CLIMATE CLASS	5	5
ANNUAL ENERGY CONSUMPTION (kWh)	319	1622

* Height with L1 legs: 2090 mm

Maxi 710 Twin

The Maxi 710 Twin cabinet is ideal for kitchens that require a wide cabinet. Its wide shelves and 530 mm depth make everything easy to access throughout the cabinet. An ergonomic choice for frequent use of small containers or two standard GN 1/1 canteens that needs to be placed side by side. Ideal for kitchens with limited space.



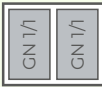
MAXI C710 TWIN
MAXI F710 TWIN

	CHILLER	FREEZER
MODEL	C710 TWIN	F710 TWIN
ITEM NUMBER	947110120	947120220
TEMPERATURE RANGE	-5°C/+12°C	-25°C/-5°C
DIMENSIONS W x D x H (mm)	820 x 789 x 2125*	820 x 789 x 2125*
NUMBER OF SHELVES (650 x 530 mm)	4	4
GROSS VOLUME (liter)	614	614
NET VOLUME (liter)	451	451
SOUND LEVEL (dB(A))	47,3	49,2
REFRIGERANT	R600a	R290
COOLING CAPACITY AT -10°C (W)	260	-
COOLING CAPACITY AT -25°C (W)	-	490
CONNECTION LOAD (W)	144	368
ENERGY EFFICIENCY CLASS / EEI	B / 26,8	C / 42,7
CLIMATE CLASS	5	5
ANNUAL ENERGY CONSUMPTION (kWh)	362	1578

* Height with L1 legs: 2090 mm

Maxi 650 Midi

The 650 Midi is specifically designed to fit into professional kitchen environments where efficiency and ergonomics are crucial. With a maximum height of just 2 metres and a depth of 775 mm, it can be positioned easily even in areas with low ceilings or narrow passages. Its ergonomic design ensures easy access in busy kitchens, and with the compressor located under the cabinet, extra storage space is available at a user-friendly height.

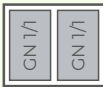


	CHILLER	FREEZER
MODEL	C650 MIDI	F650 MIDI
ITEM NUMBER	946510121	946520221
TEMPERATURE RANGE	-5°C/+12°C	-25°C/-5°C
DIMENSIONS W x D x H (mm)	820 x 775 x 2000	820 x 775 x 2000
NUMBER OF SHELVES (650 x 530 mm)	4	4
GROSS VOLUME (liter)	603	603
NET VOLUME (liter)	452	452
SOUND LEVEL (dB(A))	45,6	48,5
REFRIGERANT	R290	R290
COOLING CAPACITY AT -10°C (W)	410	-
COOLING CAPACITY AT -25°C (W)	-	499
CONNECTION LOAD (W)	234	398
ENERGY EFFICIENCY CLASS / EEI	B / 27,5	C / 46,9
CLIMATE CLASS	5	5
ANNUAL ENERGY CONSUMPTION (kWh)	371,9	1725

MAXI C650 MIDI
MAXI F650 MIDI

Maxi GR650 Midi Display

The Midi refrigerator cabinet with glass door is the ideal choice for busy kitchens where ergonomics and efficiency are key. It comes with four stainless steel wire shelves, and with the compressor located at the bottom, extra storage space is available at a user-friendly height. Its width ensures easy access to items, and the glass door provides a quick, clear view of the contents without opening the fridge. A practical solution for demanding kitchen environments.



	DISPLAY REFRIGERATOR
MODEL	GR650 MIDI
ITEM NUMBER	946570122
TEMPERATURE	+ 2°C/ + 12°C
DIMENSIONS W x D x H (mm)	820x780x2000
NUMBER OF STAINLESS STEEL SHELVES (650 x 530 mm)	4
GROSS VOLUME (liter)	603
NET VOLUME (liter)	441
SOUND LEVEL (dB(A))	48,2
REFRIGERANT	R290
COOLING CAPACITY AT -10°C (W)	410
CONNECTION LOAD (W)	260
ENERGY EFFICIENCY CLASS / EEI	E / 75,5
CLIMATE CLASS	4
ANNUAL ENERGY CONSUMPTION (kWh)	1006

MAXI GR650 MIDI
DISPLAY

Maxi 1200 roll-in

Ideal for central kitchens supplying decentral 'satellite' units, these cabinets ensure safe cold storage and easy handling during preparation and distribution. Full 60 × 80 cm tray rack trolleys can be rolled directly in and out — perfect for chilled meal staging or temporary storage before transport. Maxi 1200 provides a compact and cost-effective alternative to a traditional cold room. It requires no remote cooling system yet offers the same reliability and capacity in a stand-alone stainless-steel cabinet.



MAXI C1200
MAXI F1200
ROLL-IN

	CHILLER	FREEZER
MODEL	C1200	F1200
ITEM NUMBER	941211120	941221220
TEMPERATURE RANGE	-5°C/+12°C	-25°C/-5°C
DIMENSIONS W x D x H (mm)	880 x 1088 x 2420	880 x 1088 x 2420
GROSS VOLUME (liter)	1422	1422
NET VOLUME (liter)	1273	1273
SOUND LEVEL (dB(A))	49	50
REFRIGERANT	R290	R290
COOLING CAPACITY AT -10°C (W)	1021	-
COOLING CAPACITY AT -25°C (W)	-	1018
CONNECTION LOAD (W)	590	817
CLIMATE CLASS	5	5

Maxi 690 Standard

The Maxi 690 Standard cabinet has the same high quality and flexibility as the rest of the Maxi series and offers large storage capacity. With room for two GN 1/1 canteens in depth and three sturdy wire shelves, it is ideal as an extra freezer or cold storage solution at an affordable price.



MAXI C690 STANDARD
MAXI F690 STANDARD

	CHILLER	FREEZER
MODEL	C690 STANDARD	F690 STANDARD
ITEM NUMBER	946910120	946920220
TEMPERATURE RANGE	-5°C/+12°C	-25°C/-5°C
DIMENSIONS W x D x H (mm)	700 x 895 x 2125*	700 x 895 x 2125*
NUMBER OF SHELVES (530 x 650 mm)	3	3
GROSS VOLUME (liter)	610	610
NET VOLUME (liter)	454	454
SOUND LEVEL (dB(A))	44,4	44,5
REFRIGERANT	R290	R290
COOLING CAPACITY AT -10°C (W)	336	-
COOLING CAPACITY AT -25°C (W)	-	339
CONNECTION LOAD (W)	300	346
ENERGY EFFICIENCY CLASS / EEI	D / 53,3	D / 52,2
CLIMATE CLASS	5	5
ANNUAL ENERGY CONSUMPTION (kWh)	722	1937

* Height with L1 legs: 2090 mm

TAKE CARE OF YOUR TEAMMATES

Our products are loyal, dependable teammates that will never let you down under pressure.

But like any other important member of staff, you need to take good care of them to make them perform at their best:

- Perform regular defrosting and cleaning to ensure optimal operation and efficiency
- Check that doors close tightly and that seals are clean and undamaged
- Ensure regular maintenance of the condenser and filter

And please remember, you don't have to slam the door, most cabinets are equipped with a smart self-closing system.

FUNCTIONALITY WITH A PURPOSE

G⁺ products are designed to meet all the needs and requirements of today's professional kitchen.

With a deep understanding of the working environment and daily routines, we develop solutions that are intuitive, reliable and user-friendly.

INNOVATION AT THE FOREFRONT

The professional kitchen is constantly evolving - and so are we.

By staying ahead of industry trends and technological developments in refrigeration, we develop our products to meet the needs of tomorrow.

Innovation at Gram Professional is not just about our products, but also about how we produce and run our business.

As part of our circular mindset, **Repair, Reuse and Recycle**, we strive to create high-quality products that last - not only in performance, but also in longevity.

For us, it's not just about new technology – it's about building better, smarter and more sustainable products for the future.

COMPACT CABINETS

Flexible and Customisable Fridges and Freezers

Our G⁺ Compact series consists of energy-efficient and reliable refrigerators and freezers, designed for professional kitchens where a smaller footprint is needed. The smaller size (595 x 642 mm) makes it fit in almost anywhere, either built in or as stand-alone.

The cabinets are built from high-quality materials and come in three capacities, suitable for small, medium, and large storage needs.

Glass door models are equipped with LED lighting and a self-closing door, making them well suited to display products, with a good overview for possible self-service.

Compared to most other display products, the compact glass door range consists of full professional cabinets, with capacity and durability in a league of its own.

The products can be delivered in both stainless and white exterior, with white ABS heavy duty interior.



Standard

- Full professional refrigeration system with automatic defrost and fast temperature recovery
- Reversible right hinged door with full length ergonomic handle and lock
- Robust wire shelves with anti-tilt rails
- Low noise emission

Optional

- Stainless steel wire shelves or stainless perforated steel shelves
- Left- or right-hinged door
- Alternative leg or castor sizes
- Mounting kit for wall mounting or combining 2 products
- Foot pedal door opener

Compact 200

The Compact 200 model, with its small footprint and low height, fits almost anywhere. With low noise emissions, it is ideal for placement under countertops in kitchens, bars, and cafés where space is limited. The product’s professional refrigeration system ensures even temperature distribution and sufficient power for fast temperature recovery, even with frequent door openings.



R200 / F200
stainless / white painted steel

	REFRIGERATOR	FREEZER
MODEL	R200	F200
ITEM NUMBER (stainless)	942000121	942020221
ITEM NUMBER (white)	942000120	942020220
TEMPERATURE RANGE	+2°C/+12°C	-22°C/-5°C
DIMENSIONS W x D x H (mm)	595 x 642 x 830	595 x 642 x 830
NUMBER OF SHELVES (486 x 433 mm)	2	2
GROSS VOLUME (liter)	128	128
NET VOLUME (liter)	78	78
SOUND LEVEL (dB(A))	30,1	37
REFRIGERANT	R600a	R600a
COOLING CAPACITY AT -10°C (W)	120	-
COOLING CAPACITY AT -25°C (W)	-	178
CONNECTION LOAD (W)	62	120
ENERGY EFFICIENCY CLASS / EEI	A+ / 11,4	B / 31,4
CLIMATE CLASS	4	4
ANNUAL ENERGY CONSUMPTION (kWh)	227	890

Compact 200 Display

The Compact GR200 have the same advantages of the 200 model, now with a glass door. It features integrated LED light and can be used as a undercounter display cabinet for quality products requiring stable temperatures, or as storage where the glass door provides a quick, easy overview without opening the door.



GR200
DISPLAY REFRIGERATOR
stainless / white painted steel

	DISPLAY REFRIGERATOR
MODEL	GR200
ITEM NUMBER (stainless)	942010321
ITEM NUMBER (white)	942010320
TEMPERATURE RANGE	+2°C/+12°C
DIMENSIONS W x D x H (mm)	595 x 667 x 830
NUMBER OF SHELVES (486 x 433 mm)	2
GROSS VOLUME (liter)	128
NET VOLUME (liter)	78
SOUND LEVEL (dB(A))	33,7
REFRIGERANT	R600a
COOLING CAPACITY AT -10°C (W)	177
COOLING CAPACITY AT -25°C (W)	-
CONNECTION LOAD (W)	77
ENERGY EFFICIENCY CLASS / EEI	B / 27,3
CLIMATE CLASS	4
ANNUAL ENERGY CONSUMPTION (kWh)	543

Compact 400

The Compact 400 model is with its small footprint and a height below 190 cm a very versatile cabinet. Its dimensions fit standard kitchen elements, and with low noise emissions, it is ideal for placement in staff kitchens, bars, and cafés where space is limited. The product’s professional refrigeration system ensures even temperature distribution and sufficient power for fast temperature recovery, even with frequent door openings.



R400 / F400
stainless / white painted steel

	REFRIGERATOR	FREEZER
MODEL	R400	F400
ITEM NUMBER (stainless)	944000121	944020221
ITEM NUMBER (white)	944000120	944020220
TEMPERATURE RANGE	+2°C/+12°C	-22°C/-5°C
DIMENSIONS W x D x H (mm)	595 x 642 x 1875	595 x 642 x 1875
NUMBER OF SHELVES (486 x 433 mm)	5	5
GROSS VOLUME (liter)	359	359
NET VOLUME (liter)	266	266
SOUND LEVEL (dB(A))	34,5	36,6
REFRIGERANT	R600a	R600a
COOLING CAPACITY AT -10°C (W)	210	-
COOLING CAPACITY AT -25°C (W)	-	200
CONNECTION LOAD (W)	88	151
ENERGY EFFICIENCY CLASS / EEI	B / 31	C / 39,5
CLIMATE CLASS	4	4
ANNUAL ENERGY CONSUMPTION (kWh)	325	1011

Compact 400 Display

The Compact GR400 have the same advantages of the 400 model, now with a glass door. The product has integrated LED light and can be used as a display cabinet for quality products with high demand for temperature stability, or for storage where the glass door facilitates a fast and easy overview without opening the door.



GR400
DISPLAY REFRIGERATOR
stainless / white painted steel

	DISPLAY REFRIGERATOR
MODEL	GR400
ITEM NUMBER (stainless)	944010321
ITEM NUMBER (white)	944010320
TEMPERATURE RANGE	+2°C/+12°C
DIMENSIONS W x D x H (mm)	595 x 667 x 1875
NUMBER OF SHELVES (486 x 433 mm)	5
GROSS VOLUME (liter)	356
NET VOLUME (liter)	266
SOUND LEVEL (dB(A))	34,2
REFRIGERANT	R600a
COOLING CAPACITY AT -10°C (W)	210
COOLING CAPACITY AT -25°C (W)	-
CONNECTION LOAD (W)	103
ENERGY EFFICIENCY CLASS / EEI	D / 64,7
CLIMATE CLASS	4
ANNUAL ENERGY CONSUMPTION (kWh)	677

Compact 600

The Compact 600 is the ideal cabinet for kitchens working with GN measurements, but where height is limited and most standard GN refrigerators and freezers don't fit. With a height below 2 meters and space for GN 2/1 containers in depth, the Compact 600 fits perfectly and helps maximise the use of available kitchen space.



R600 / F600
stainless / white painted steel

	REFRIGERATOR	FREEZER
MODEL	R600	F600
ITEM NUMBER (stainless)	946000121	946020221
ITEM NUMBER (white)	946000120	946020220
TEMPERATURE RANGE	+2°C/+12°C	-22°C/-5°C
DIMENSIONS W x D x H (mm)	695 x 868 x 2010	695 x 868 x 2010
NUMBER OF SHELVES (530 x 650 mm)	4	4
GROSS VOLUME (liter)	580	580
NET VOLUME (liter)	421	421
SOUND LEVEL (dB(A))	45,4	46,4
REFRIGERANT	R600a	R290
COOLING CAPACITY AT -10°C (W)	413	-
COOLING CAPACITY AT -25°C (W)	-	502
CONNECTION LOAD (W)	261	398
ENERGY EFFICIENCY CLASS / EEI	C / 40,2	C / 44,5
CLIMATE CLASS	5	5
ANNUAL ENERGY CONSUMPTION (kWh)	523	1578

Compact 600 Display

The Compact GR600 offers all the benefits of the 600 model, now with a glass door. It features integrated LED lighting and can serve as a display cabinet for high-demand products requiring stable temperatures, or as storage where the glass door provides a quick, easy overview without opening the door.



GR600
DISPLAY REFRIGERATOR
stainless / white painted steel

	DISPLAY REFRIGERATOR
MODEL	GR600
ITEM NUMBER (stainless)	946010321
ITEM NUMBER (white)	946010320
TEMPERATURE RANGE	+2°C/+12°C
DIMENSIONS W x D x H (mm)	695 x 868 x 2010
NUMBER OF SHELVES (530 x 650 mm)	4
GROSS VOLUME (liter)	580
NET VOLUME (liter)	421
SOUND LEVEL (dB(A))	45
REFRIGERANT	R600a
COOLING CAPACITY AT -10°C (W)	413
COOLING CAPACITY AT -25°C (W)	-
CONNECTION LOAD (W)	276
ENERGY EFFICIENCY CLASS / EEI	D / 70,1
CLIMATE CLASS	4
ANNUAL ENERGY CONSUMPTION (kWh)	912

LOW POWER CONSUMPTION

Newer refrigerators and freezers have a much lower power consumption than older models. We continuously work to optimise the energy efficiency of all our products.

Even though newer cabinets use less power, there are still things you can do to keep consumption down even further:

- Avoid setting the temperature too low if it's not necessary, as this increases power consumption
- Do not place your devices too close to heat sources, such as ovens and radiators, as this can increase the need for cooling
- Frequent door openings will cause more ice around your evaporator, and it may require additional defrosts to ensure optimal operation

DRIVEN BY TRADITION

The G⁺ product range represents decades of expertise in professional refrigeration technology. Building on a long tradition of Scandinavian craftsmanship and engineering, G⁺ embodies the next generation of high-performance solutions for the professional kitchen.

At the heart of all G⁺ products is our commitment to Quality, Functionality and Innovation – three principles that are reflected in everything we do.

OUR QUALITY SPEAKS FOR ITSELF

We insist on delivering quality, not only in our products, but in everything that we do. It characterises every aspect of our work – from design and production to customer service. To underline this commitment, we offer up to 5 years parts warranty and guarantee the availability of spare parts for at least 10 years.

We take pride in what we do and naturally comply to international quality standards such as ISO 9001 and ISO 14001.

GASTRO COUNTERS

Flexible Counter Solutions – Where Performance Meets Practicality

In busy commercial kitchens, efficiency and clever organization are essential. With Gastro counters, you have everything you need right at your fingertips.

Doors are easy to open and close, and anti-tilt shelf rails ensure that you can handle your ingredients safely with a swift hand.

Our energy-efficient and reliable chiller and freezer counters are built for intensive use, handling frequent door openings while maintaining an even and stable temperature throughout the counter.

The Gastro counter range offer a wide variety of customisation options to suit your kitchen's needs.

Designed to be placed directly against a wall, under a tabletop, on a plinth, or as a stand-alone makes it versatile and easy to incorporate into your kitchen layout.

The rounded corners and removable magnetic door gaskets make it easy to clean and maintain excellent hygiene and the automatic and rapid defrosting ensures stable operation so you can focus on your most essential job – the food.



Standard

- Stainless steel inside and outside
- 2 stainless steel wire shelves pr. section
- Anti-tilt shelf support
- 50 mm insulated tabletop
- Reversible self-closing doors with ergonomic handles
- Removable magnetic door gaskets
- Adjustable legs (135-200mm)

Optional

- Drawers: 1/2 or 1/3 pr. section (chillers only)
- Tabletop : Flat, with 50 mm backsplash, with insulated top (for placement under a tabletop)
- Alternative leg or caster sizes
- Electric elevation system
- Stainless perforated steel shelves
- Available for remote installation with CO2 or other refrigerants



C2 / F2
2-section chiller / freezer



C3 / F3
3-section chiller / freezer



C4 / F4
4-section chiller / freezer

	CHILLER	FREEZER	CHILLER	FREEZER	CHILLER	FREEZER
MODEL	C2	F2	C3	F3	C4	F4
ITEM NUMBER	940210120	940220220	940310120	940320220	940410120	940420220
TEMPERATURE RANGE	-5°C/+12°C	-25°C/-5°C	-5°C/+12°C	-25°C/-5°C	-5°C/+12°C	-25°C/-5°C
DIMENSIONS W x D x H (mm)	1289 x 700 x 885*	1289 x 700 x 885*	1726 x 700 x 885*	1726 x 700 x 885*	2163 x 700 x 885*	2163 x 700 x 885*
NUMBER OF SHELVES (325 x 530 mm)	4	4	6	6	8	8
GROSS VOLUME (liter)	345	345	506	506	668	668
NET VOLUME (liter)	192	192	288	288	384	384
SOUND LEVEL (dB(A))	45,1	46	45,1	46,8	43,8	48,7
REFRIGERANT	R290	R290	R290	R290	R290	R290
COOLING CAPACITY AT -10°C (W)	225	-	225	-	225	-
COOLING CAPACITY AT -25°C (W)	-	553	-	553	-	612
CONNECTION LOAD (W)	207	384	214	391	218	437
ENERGY EFFICIENCY CLASS / EEI	A / 20,9	C / 46,8	A / 21,1	D / 53,1	A / 23,2	D / 56
CLIMATE CLASS	5	4	5	4	5	4
ANNUAL ENERGY CONSUMPTION (kWh)	476	1638	553	2158	644	2587

* Height from 885 - 950 depending on the choice of legs

PRECISION COOLING FOR EVERY CORNER OF YOUR KITCHEN

With our Gastro counter chiller, you can effortlessly access your prepped items, garnishes, and add-ons to your servings without having to move away from your work zone.

With an extended temperature range (-5 / +12 °C), the chiller counters are flexible and ideal for preserving your food, whether it is fish and shellfish, delicate herbs and toppings, or items in the pastry department.

The counter chillers are designed with ergonomics and efficiency in mind, and you can customise them with many different options to suit your kitchen perfectly. Choose between 2, 3 or 4 sections with doors or drawers with easy-to-use handles that ensure quick access, along with a variety of other options to tailor the products to your requirements.



REUSE, REPAIR & RECYCLE

As part of a circular mindset, we prioritise sustainable design. That is why our products are built to last – and designed for easy repair when needed.

Our products are continuously tested and optimised for performance and durability, so we are confident in their quality.

We support our customers every step of the way and are always ready to provide technical assistance whenever challenges arise.

PROCESS CABINETS

Blast Chillers and Rapid Cooling for Optimal Food Safety

Common to all models is the high build quality, modern cooling technology and the possibility of integration into existing processes and working environments.

With powerful and efficient fans, G⁺ Process cabinets are the right choice for any kitchen where food safety, hygiene and speed are crucial.

Our process refrigerators and freezers are designed to meet the highest demands, whether it's rapid cooling, precise temperature control or safe storage in sensitive environments, we offer solutions that combine reliability, flexibility and energy-efficient operation.

No matter if it's for commercial kitchens, bakeries, patisseries or the food industry – there is a cabinet to match your needs.



PROCESS BC50 BLAST CHILLER

A powerful roll-in blast chiller with a capacity up to 60kg. With a robust design, electronic control and CO2 compatibility, the BC50 is a reliable choice for commercial kitchens that need fast and safe cooling in an efficient working environment.

The cooldown process is controlled by the included food probe.

The BC50 can be placed on the floor, so trolleys can be rolled directly into the cabinet, giving a better working environment not having to manually load the heavy gastro pans.

It can also be adapted to fit a roll-in trolley for rational ovens SCC/CPC 201 or COMBI 20 1/1.



BC50
blast chiller

Standard

- Max capacity: 60 kg
- Robust stainless steel construction
- Right-hinged door with lock and practical snap lock
- Powerful fans for efficient cooling
- Efficient evaporator

Optional

- The products are available with water-cooled condenser
- Also available for remote installation with CO2 or other refrigerants
- Adaption set for Rational SCC/CPC 201 and COMBI 20 1/1
- Option for heated bottom plate for very low temperature usage

	BC50
MODEL	BC50 H S
ITEM NUMBER	940500110
TEMPERATURE RANGE	-25°C/+10°C
DIMENSIONS W x D x H (mm)	780 x 1030 x 2215
GROSS VOLUME (liter)	970
NET VOLUME (liter)	630
SOUND LEVEL (dB(A))	-
REFRIGERANT	R452A
COOLING CAPACITY AT -10°C (W)	4588
COOLING CAPACITY AT -25°C (W)	-
CONNECTION LOAD (W)	3011
CLIMATE CLASS	4
MAX LOADING CAPACITY (kg) from +70°C to +3°C in 90 min.	60



SC500
shock chiller

SC710
shock chiller

PROCESS SC500 & SC710 SHOCK CHILLER

Multifunctional cabinets for the modern production kitchen - when flexibility and functionality are key. Both models have the same features but come in different sizes and capacities.

With three different cooling programmes – timed, hard or gentle cooling to a set temperature – the kitchen has full control over food safety and quality. The cabinet can also be used for defrosting, chilling or freezing with temperatures ranging from -30°C to +10°C, making it ideal as a flexible backup solution during busy periods.

Once the planned cooling cycle is complete, the cabinet automatically returns to store the products at the set temperature.

A versatile choice for kitchens that require both refrigeration and freezing capacity and extra storage space - without compromising on quality or control.

Standard

- 3 cooling programs : timed, hard or gentle
- Temperature range -30°C to + 10°C
- Automatic defrosting
- Fridge/freezer with storage and defrosting unit in one
- Powerful fans and efficient evaporator
- 5 stainless steel wire shelves
- Effective LED lighting
- Pedal door opener
- Adjustable legs 135/200 mm

Optional

- Available for remote installation on CO2 or other refrigerants
- Remote products are available with 'hygiene roof'

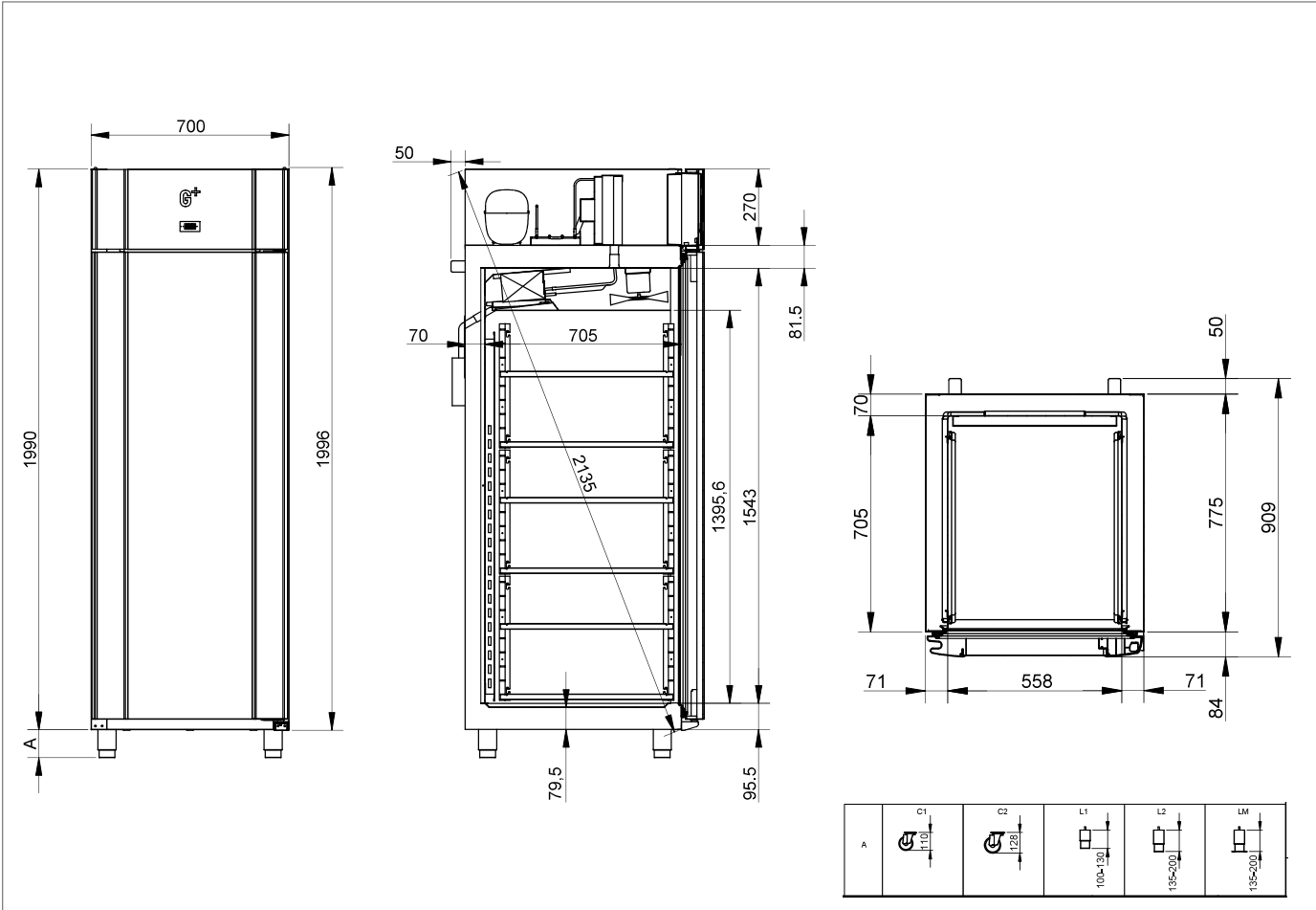
	SC500	SC710
MODEL	SC500	SC710
ITEM NUMBER	945180120	947180120
TEMPERATURE RANGE	-30°C/+10°C	-30°C/+10°C
DIMENSIONS W x D x H (mm)	600 x 855 x 2125*	820 x 785 x 2125*
NUMBER OF SHELVES	5 (400 x 600)	5 (650 x 530)
GROSS VOLUME (liter)	465	614
NET VOLUME (liter)	319	451
SOUND LEVEL (dB(A))	-	-
REFRIGERANT	R290	R290
COOLING CAPACITY AT -10°C (W)	1705	2326
COOLING CAPACITY AT -25°C (W)	-	-
CONNECTION LOAD (W)	1025	1523
ENERGY EFFICIENCY CLASS / EEI	230 V, 50 HZ / 5,66A	230 V, 50 HZ / 8,24A
CLIMATE CLASS	5	5
MAX LOADING CAPACITY (kg) from +60°C to +8°C in 4 hours	25	50

* Height with L1 legs: 2090 mm

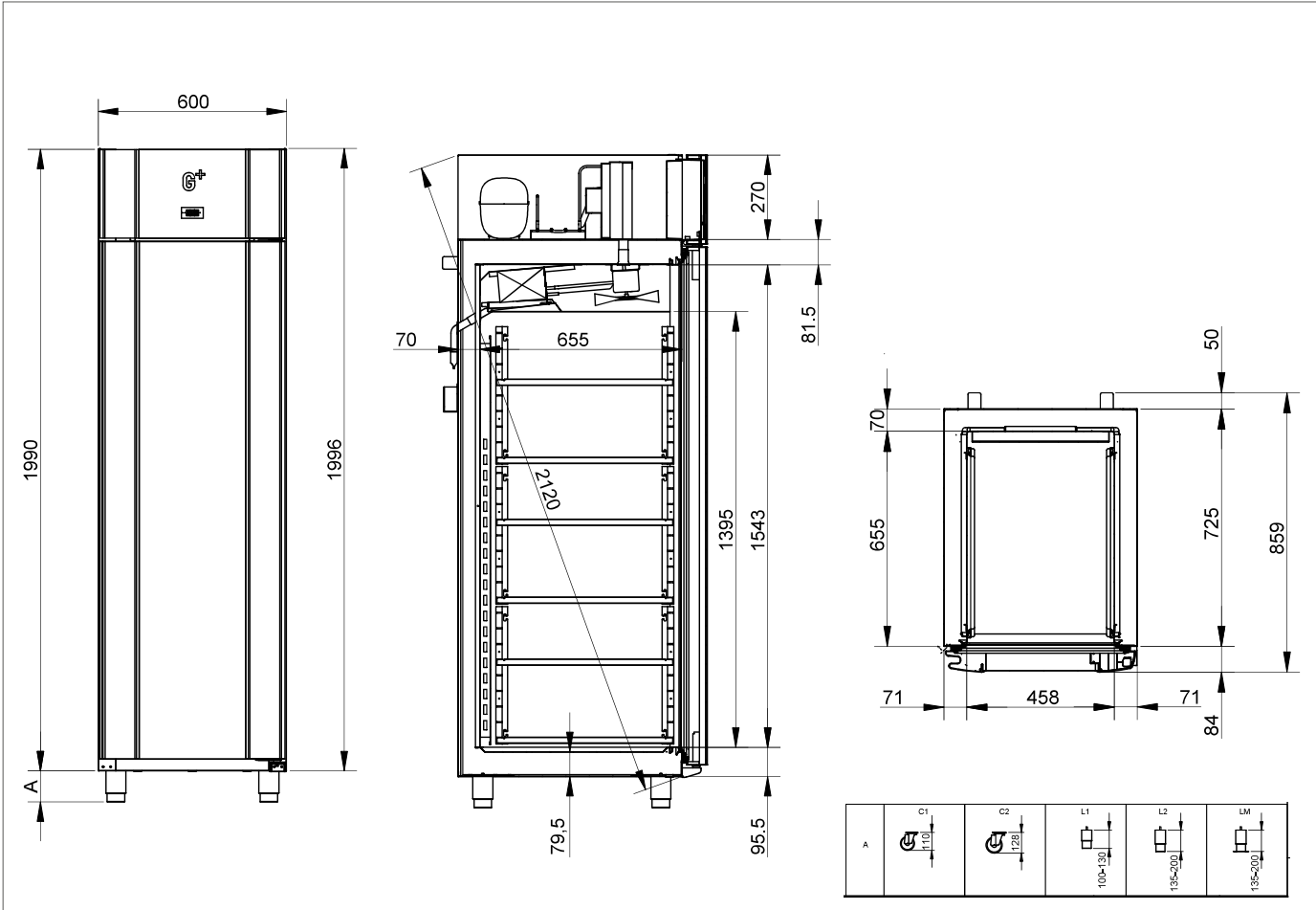
DIMENSIONS



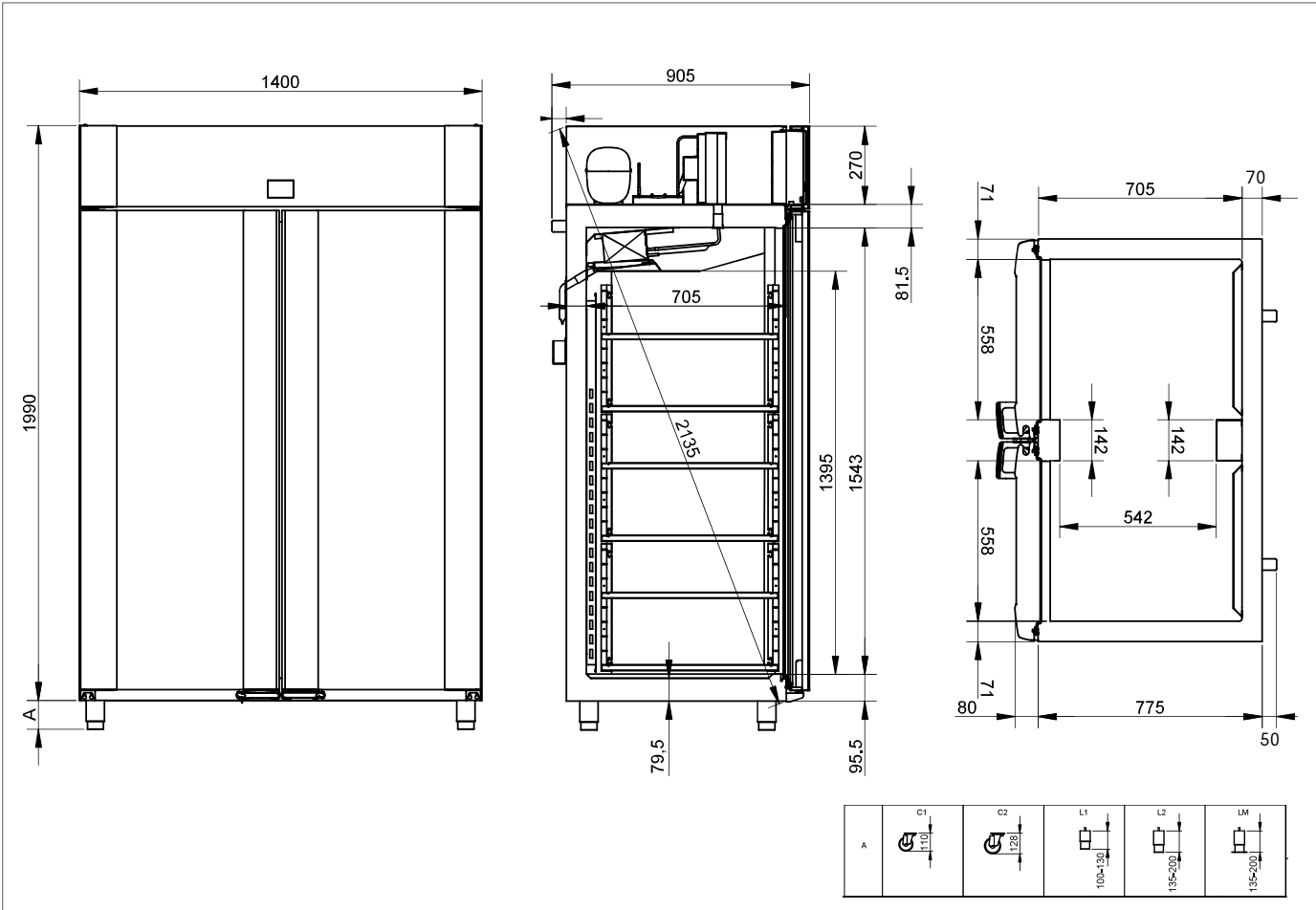
MAXI C700 PLUS / MAXI F700 PLUS



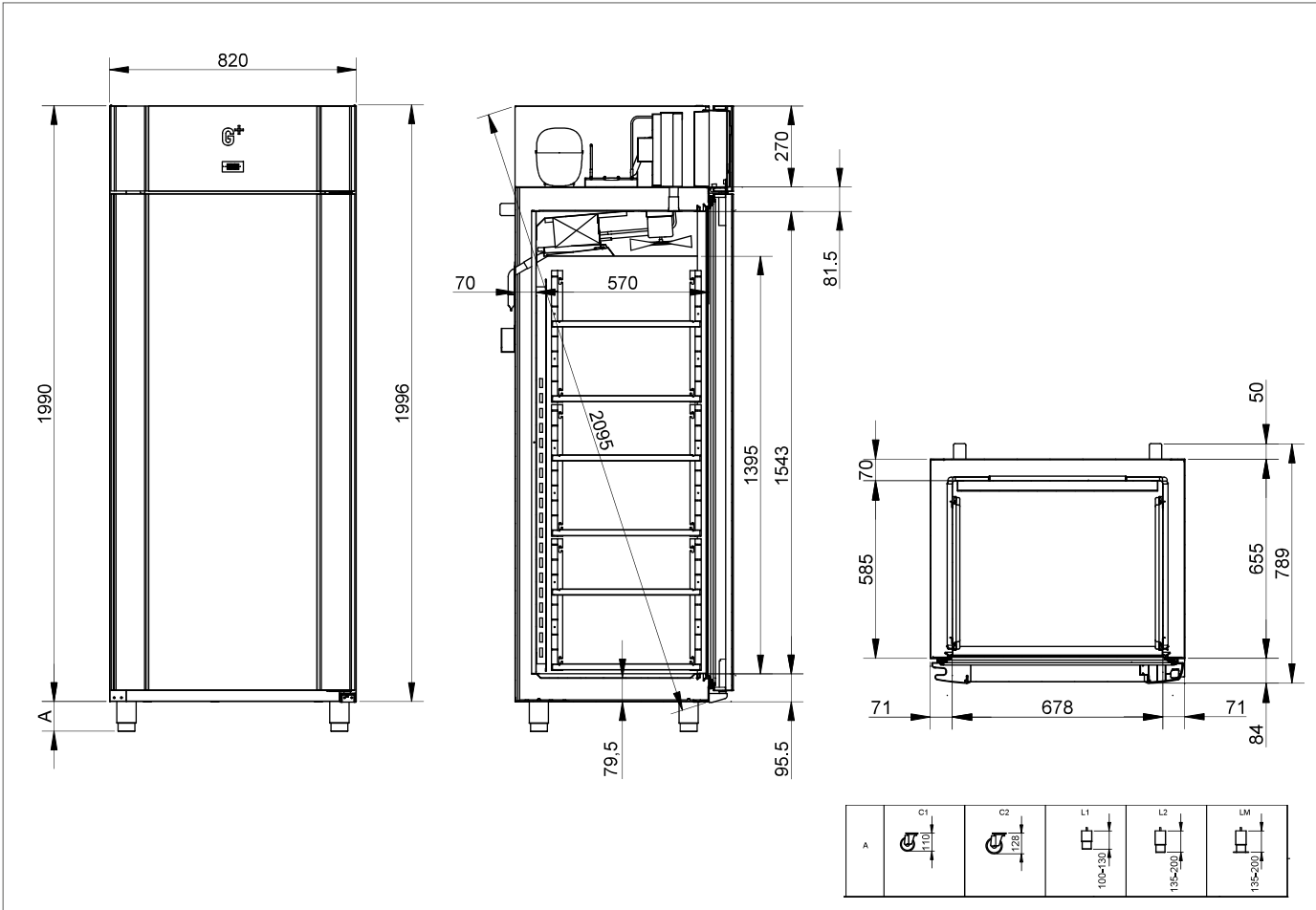
MAXI C510 EURO / MAXI F510 EURO

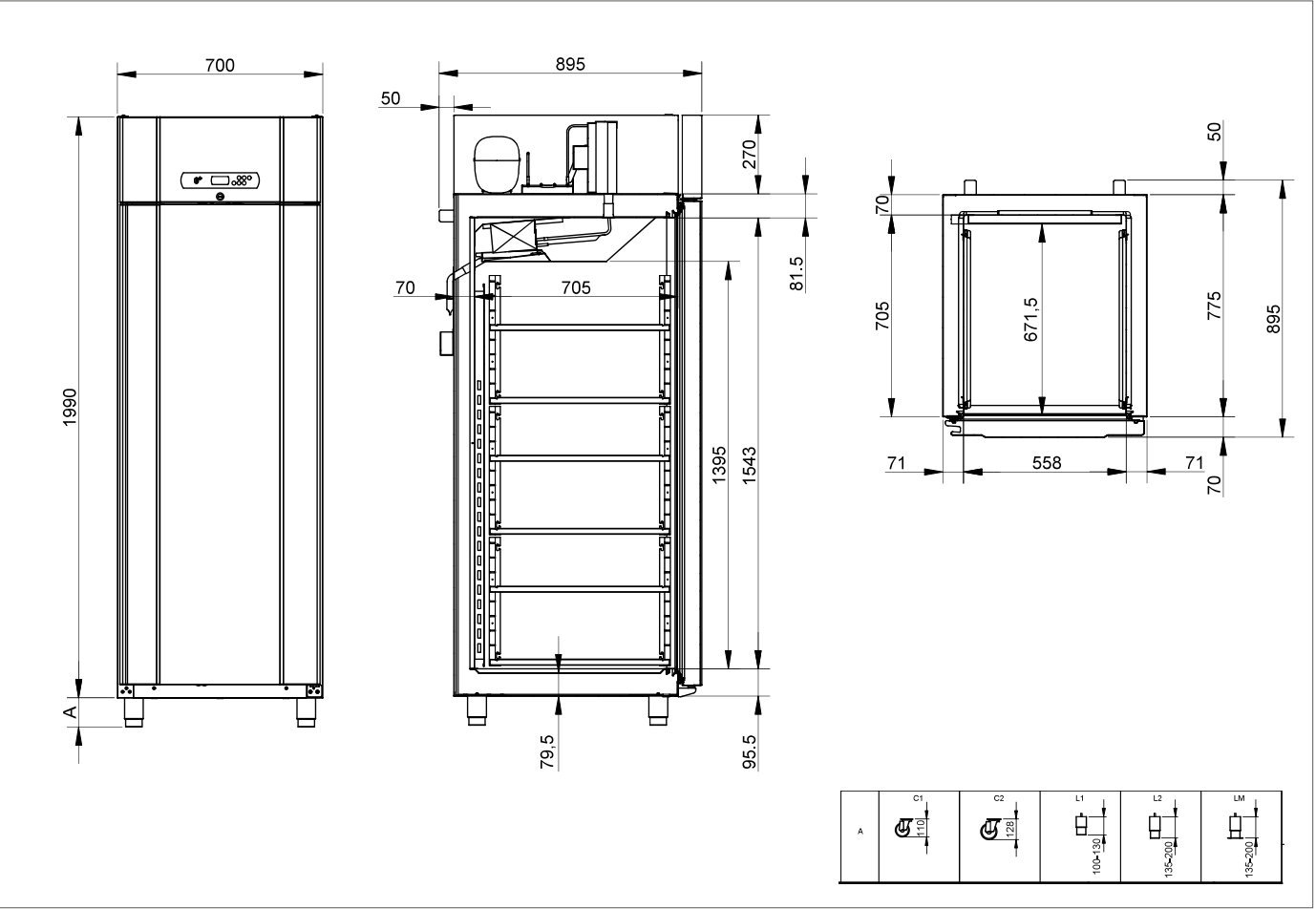
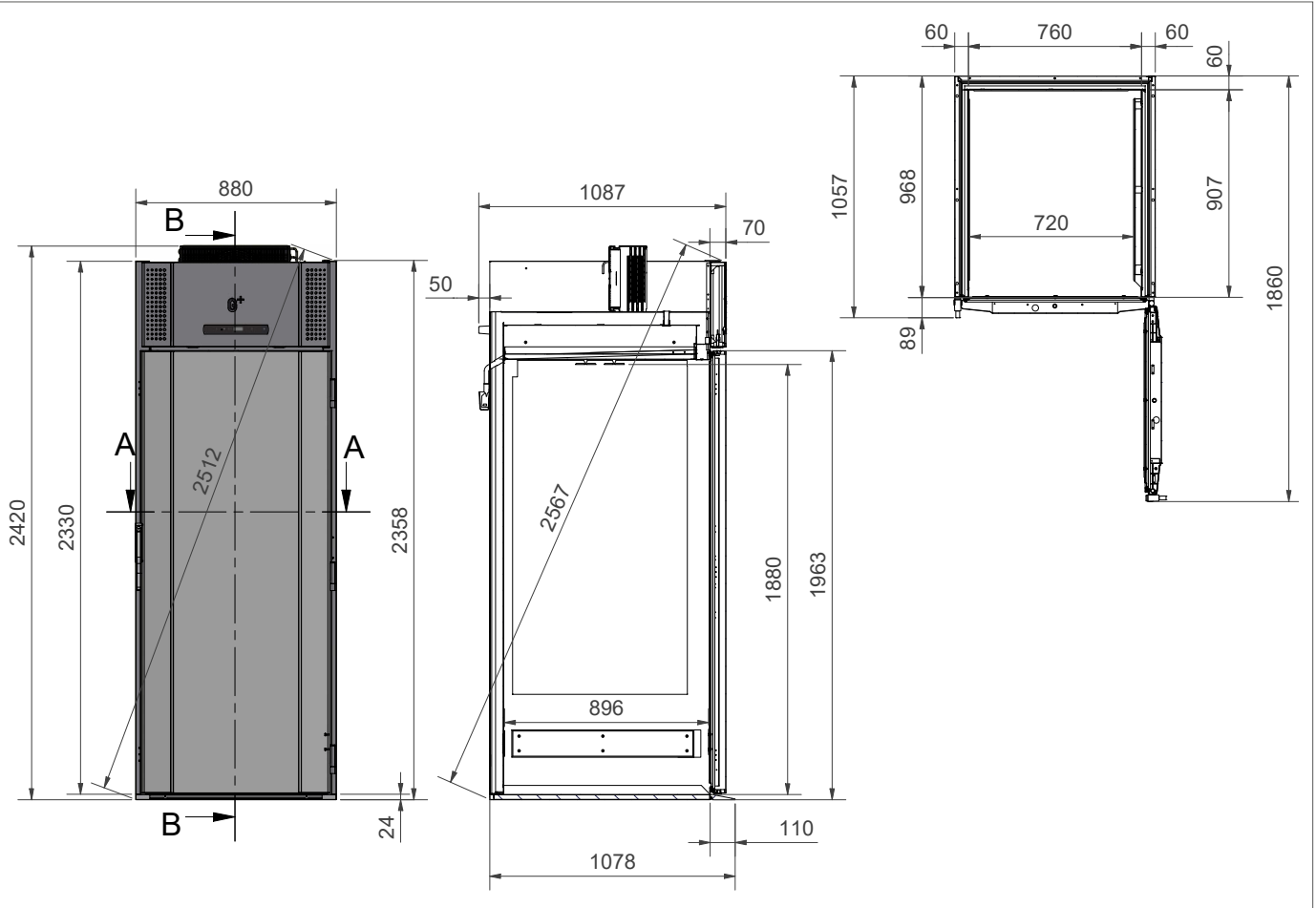
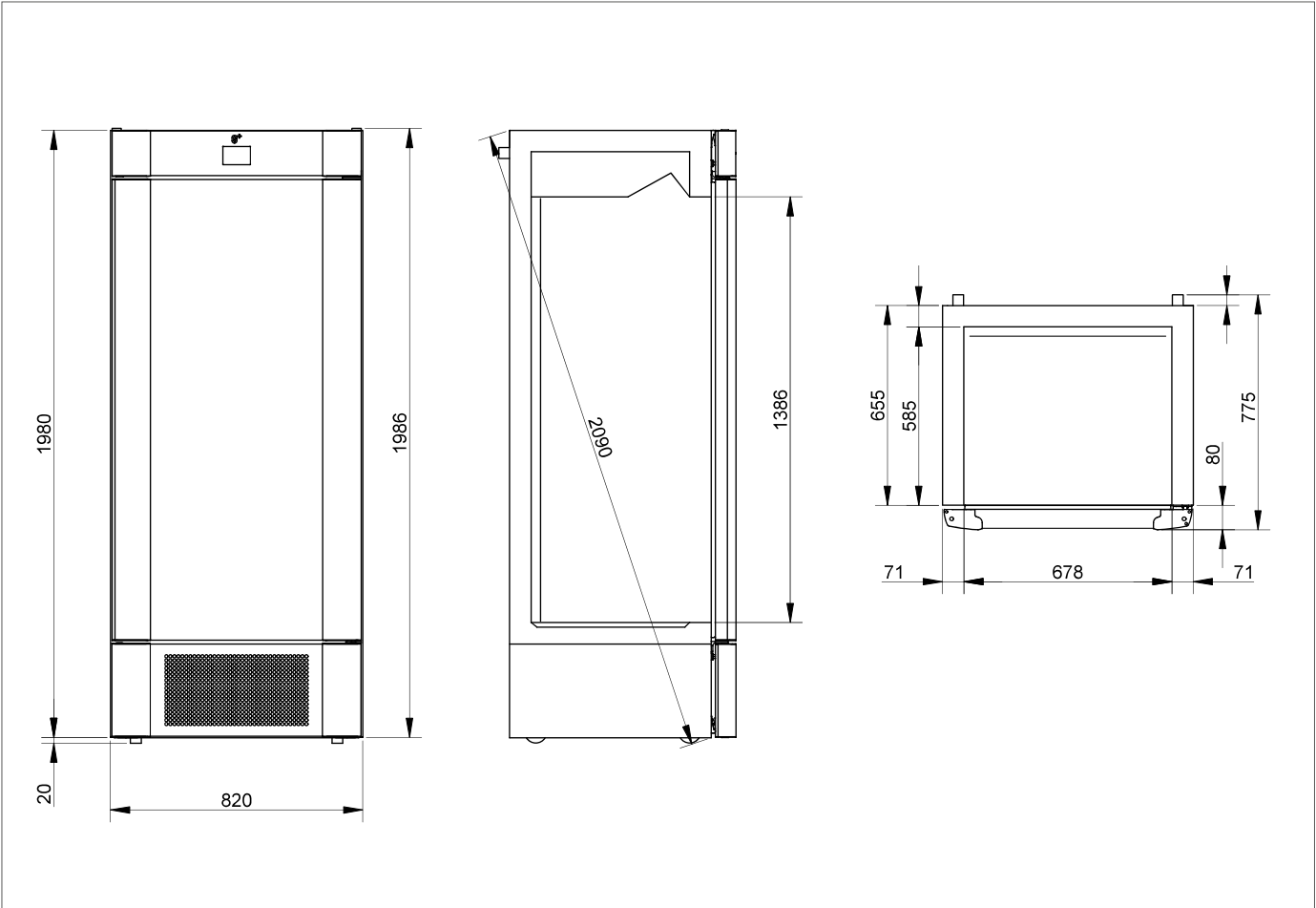


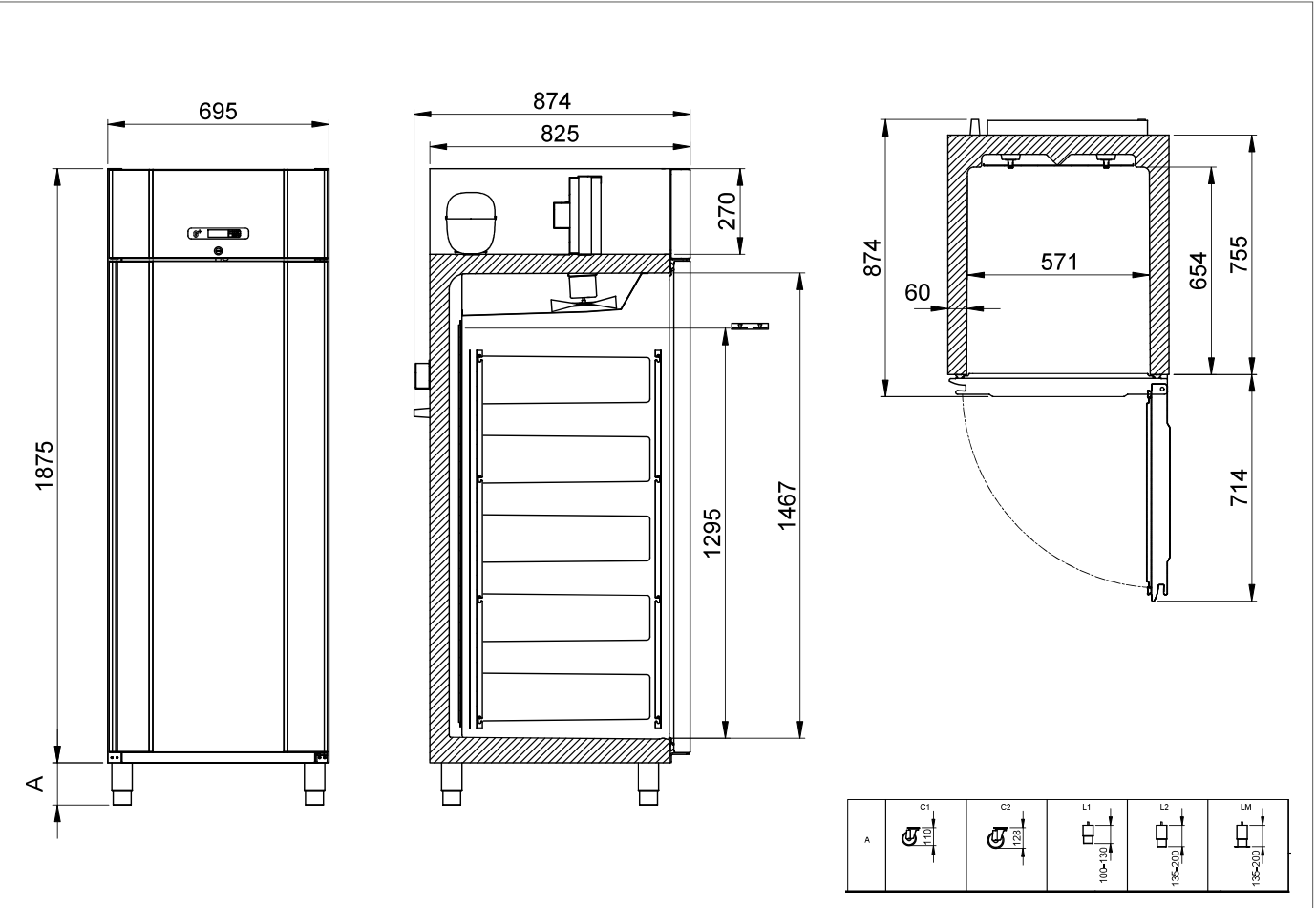
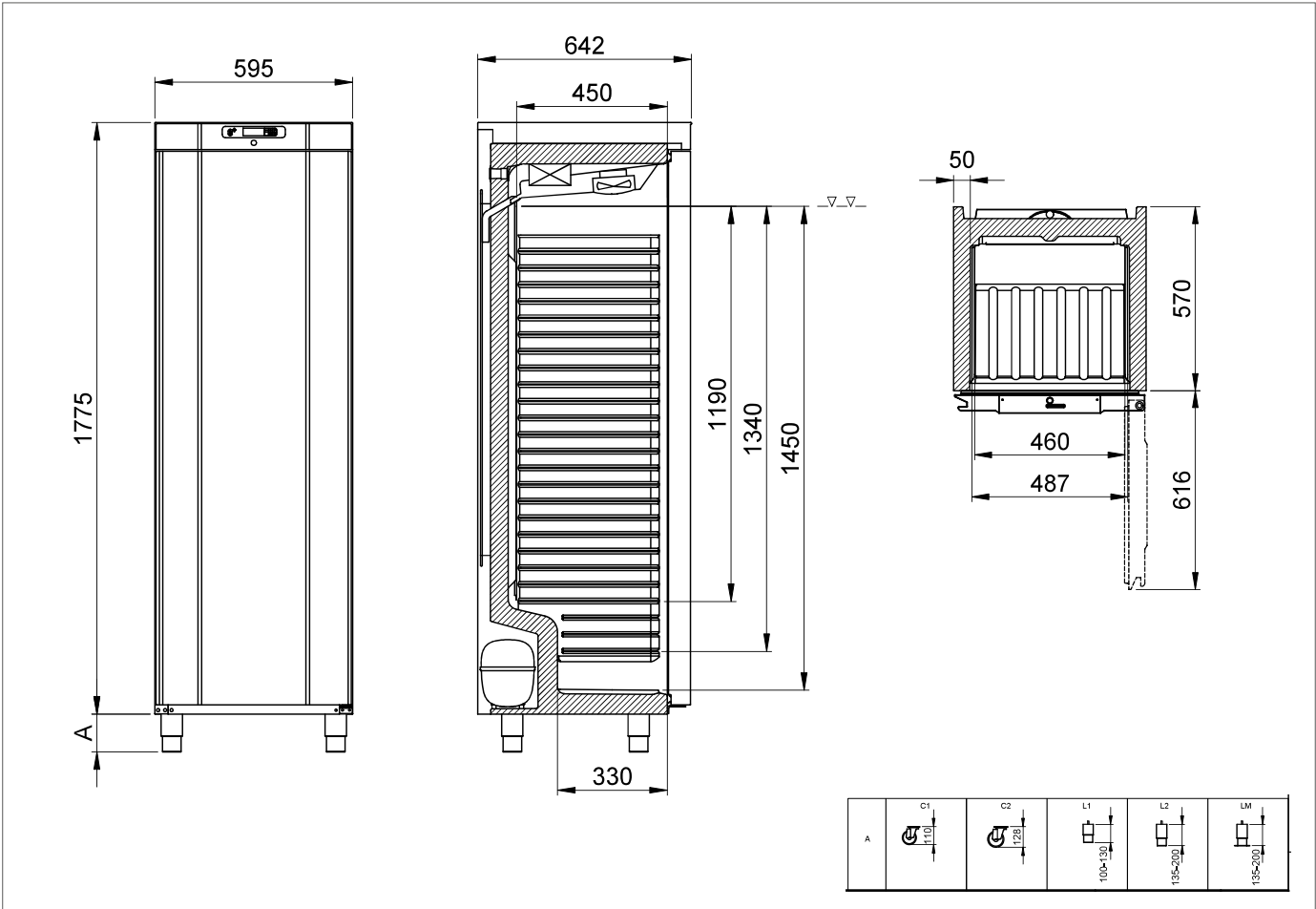
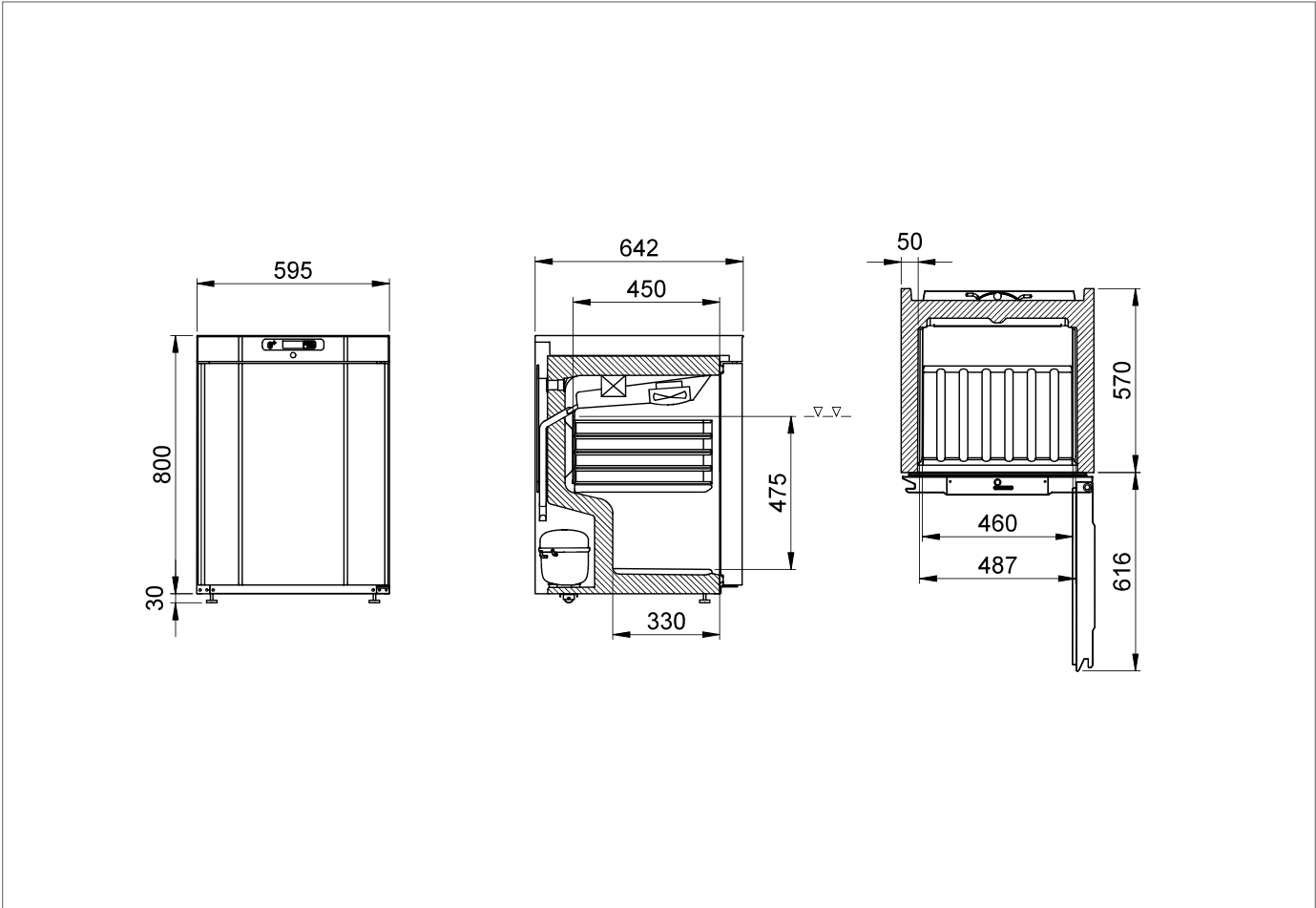
MAXI C1400 PLUS / MAXI F1400 PLUS



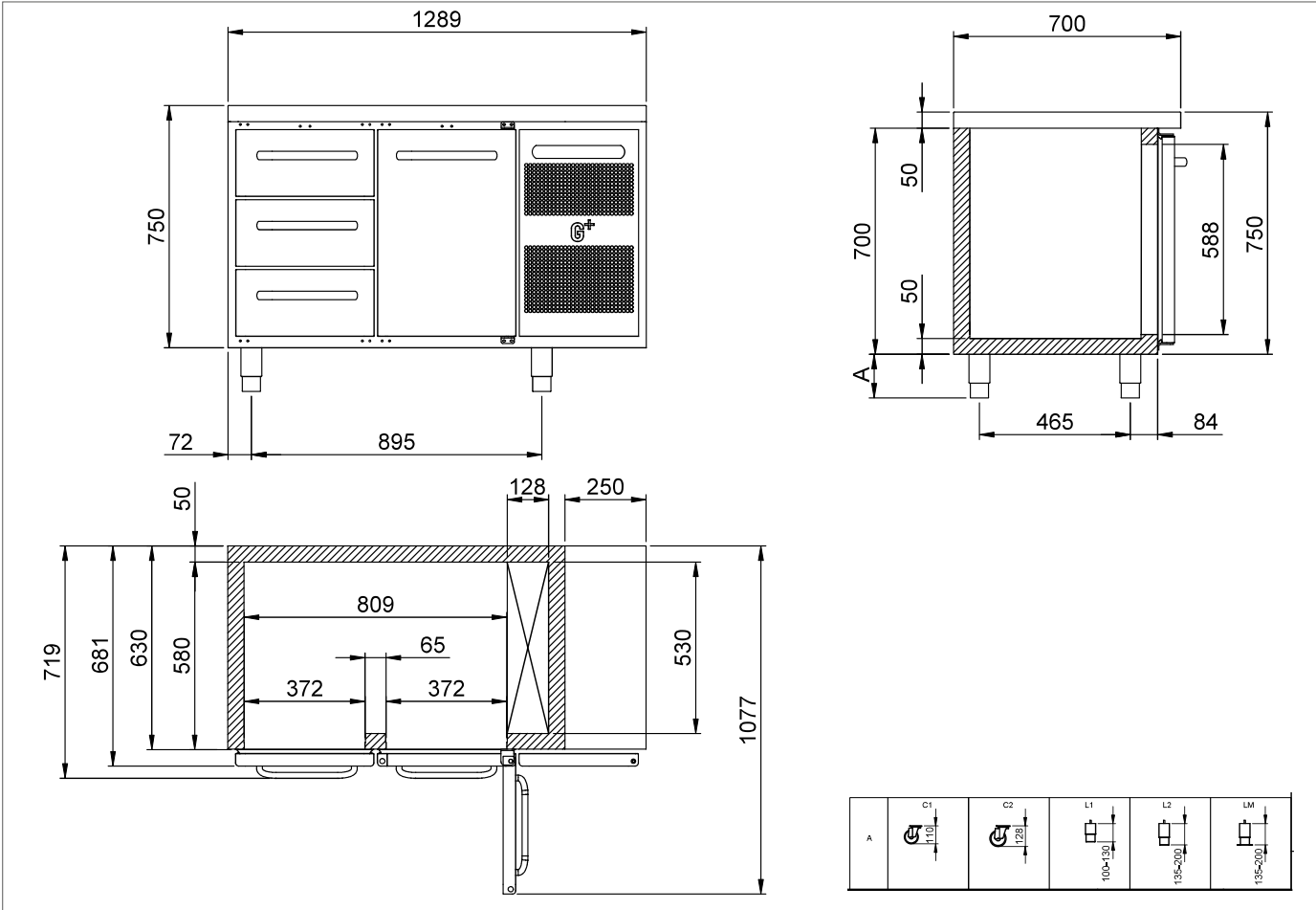
MAXI C710 TWIN / MAXI F710 TWIN



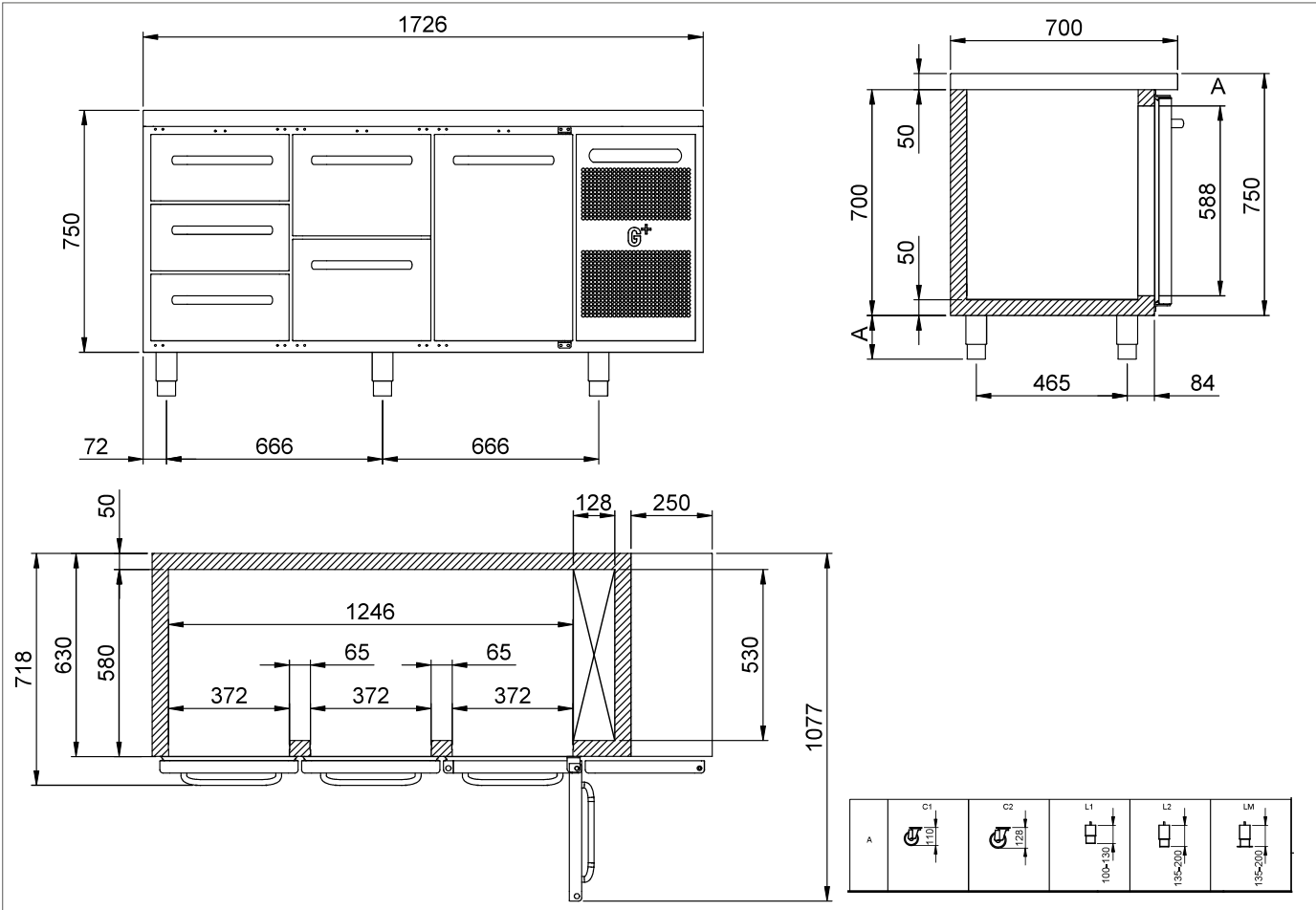




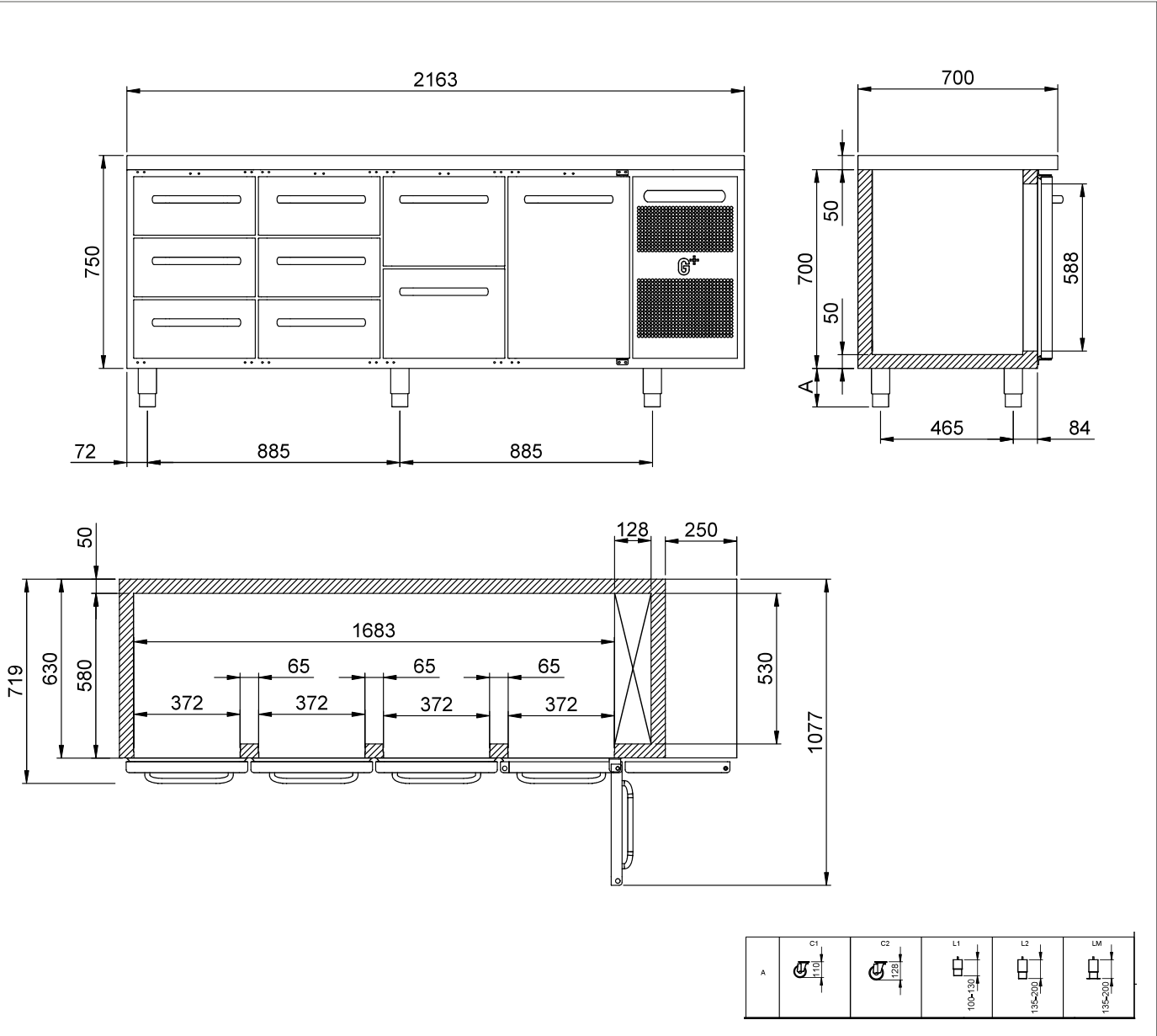
GASTRO COUNTER C2 / GASTRO COUNTER F2



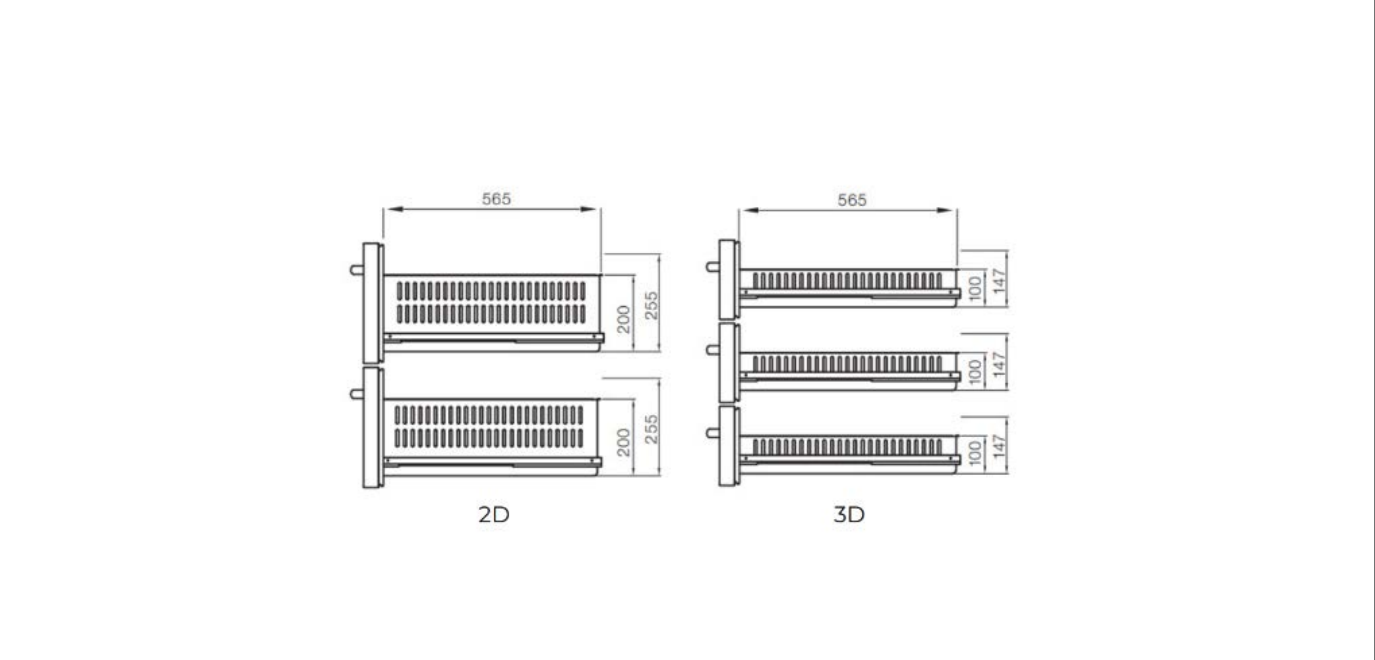
GASTRO COUNTER C3 / GASTRO COUNTER F3



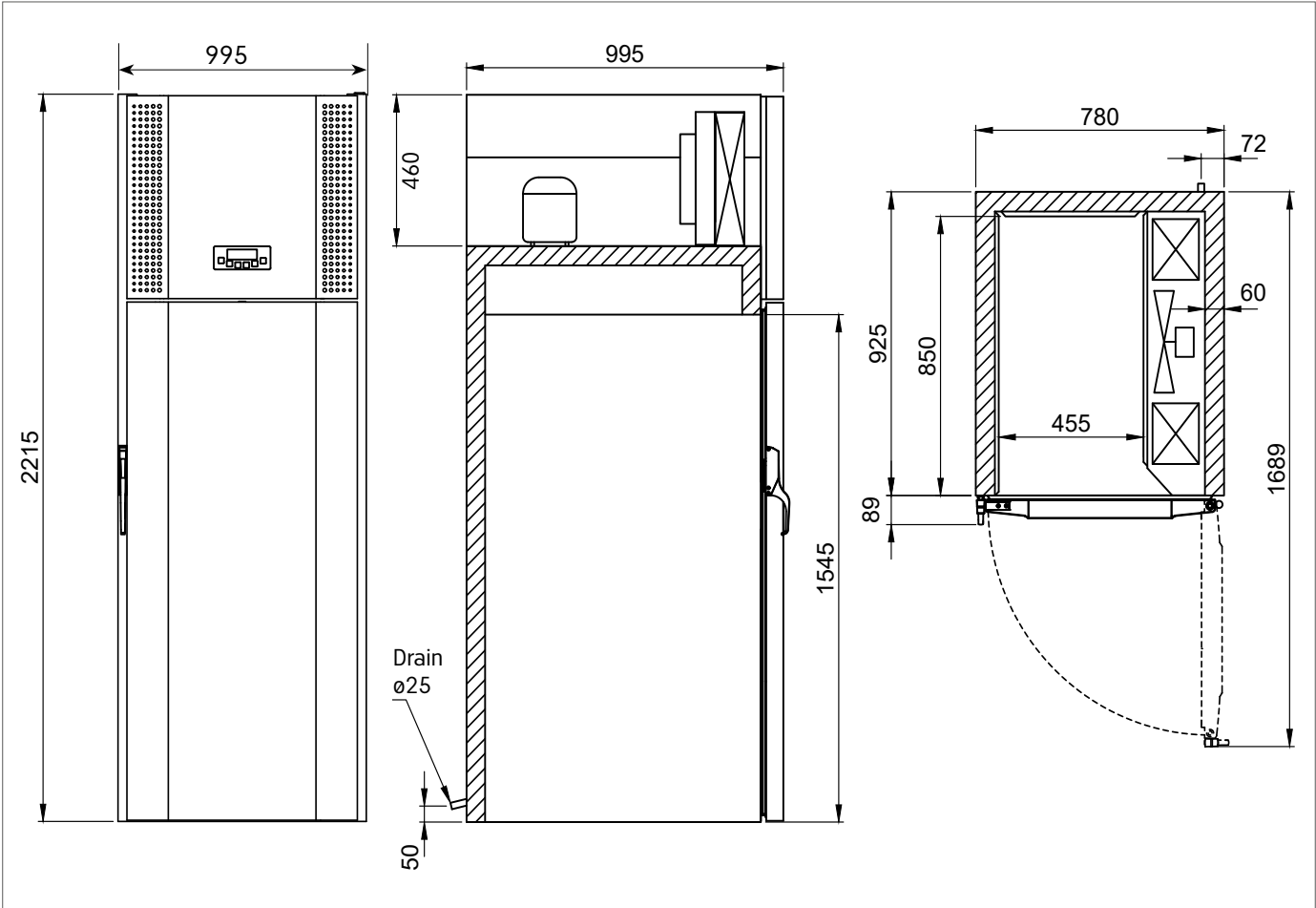
GASTRO COUNTER C4 / GASTRO COUNTER F4



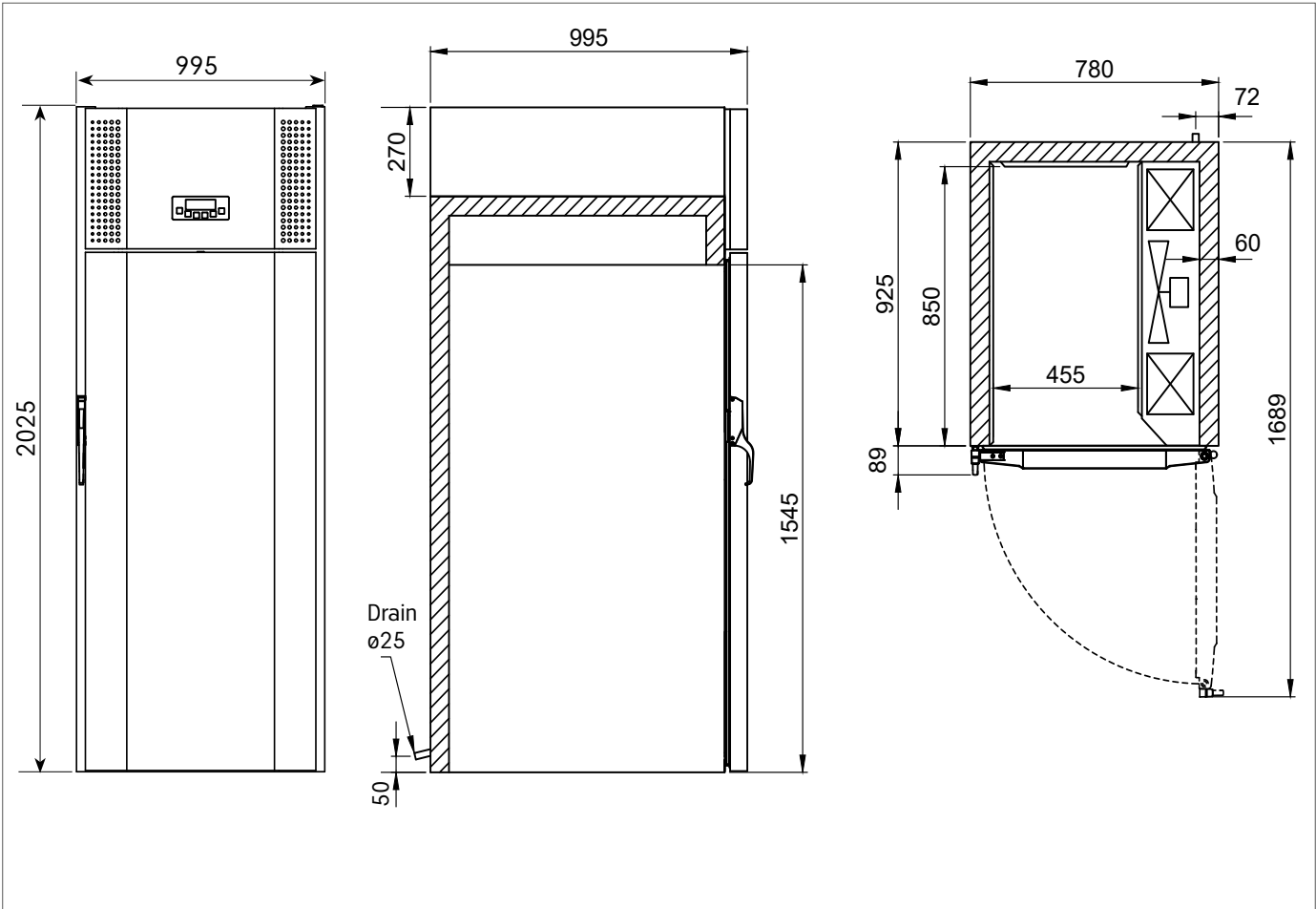
GASTRO COUNTER DRAWERS



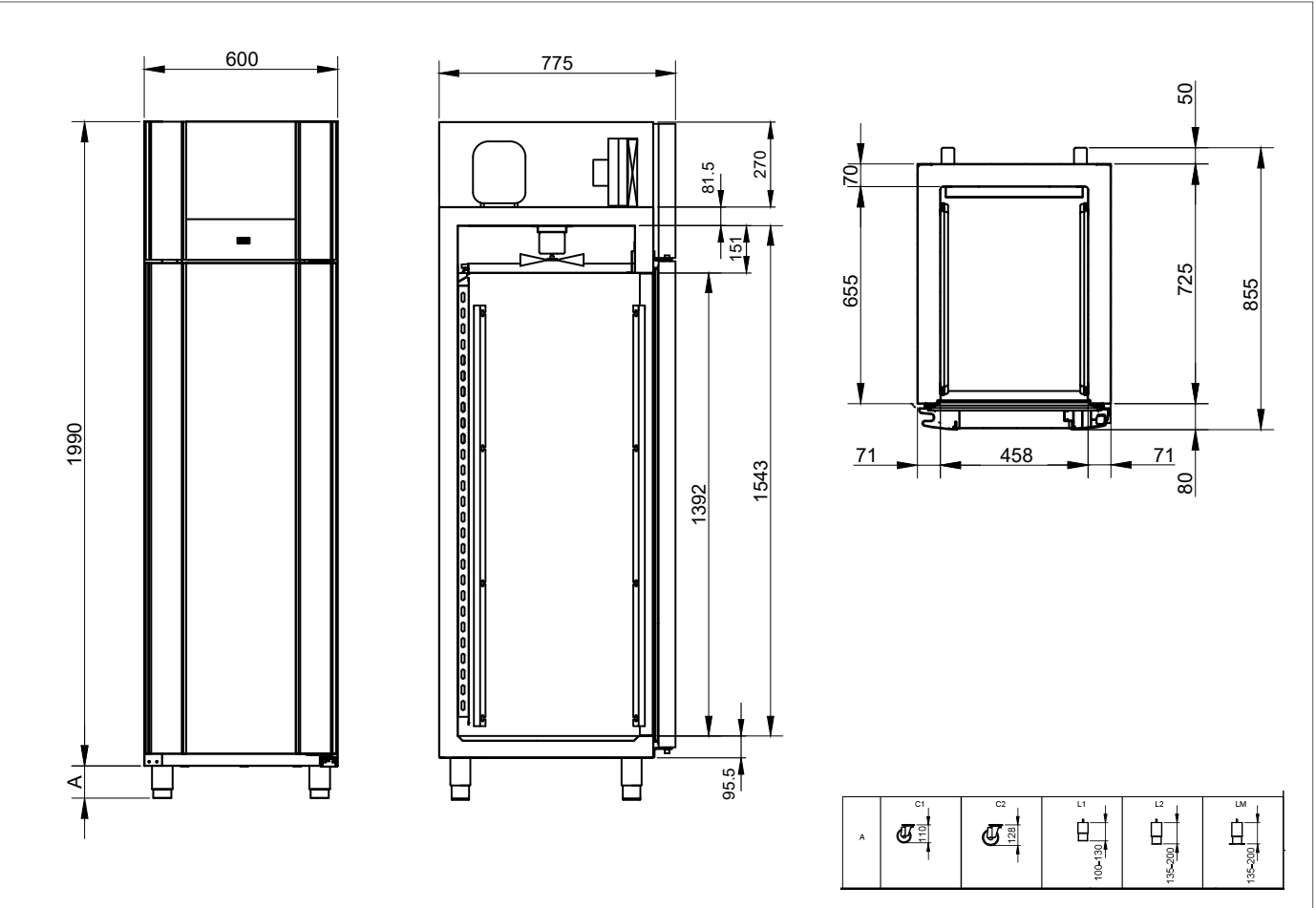
PROCESS BC50



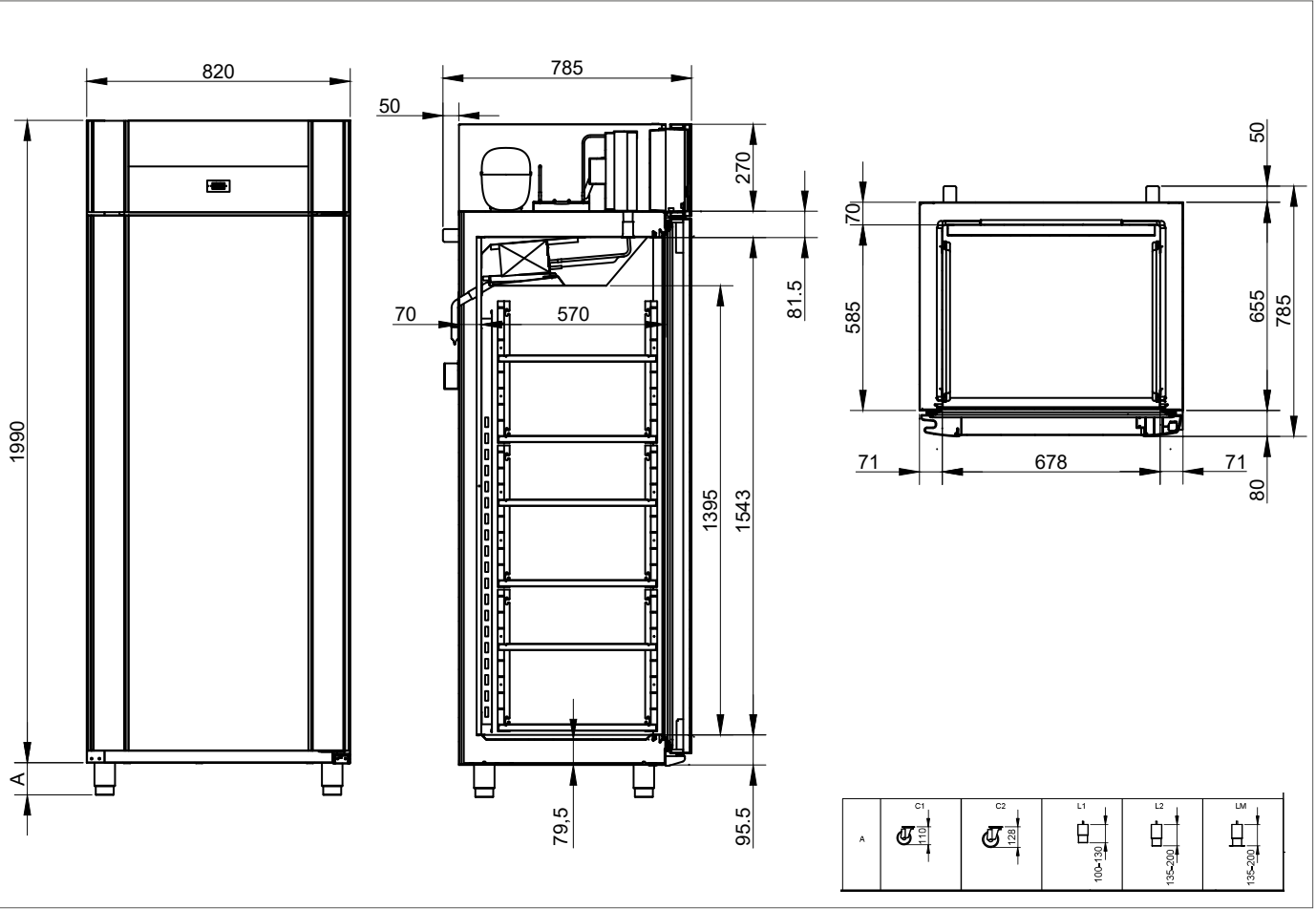
PROCESS BC50 REMOTE



PROCESS SC500



PROCESS SC710





G⁺

BY **GRAM PROFESSIONAL**

Gram Professional ApS

Aage Grams Vej 1, 6500 Vojens, Denmark

www.gram-professional.com

+45 7320 1200

sales@gram-professional.com



MADE IN
DENMARK